






Lumens[®]

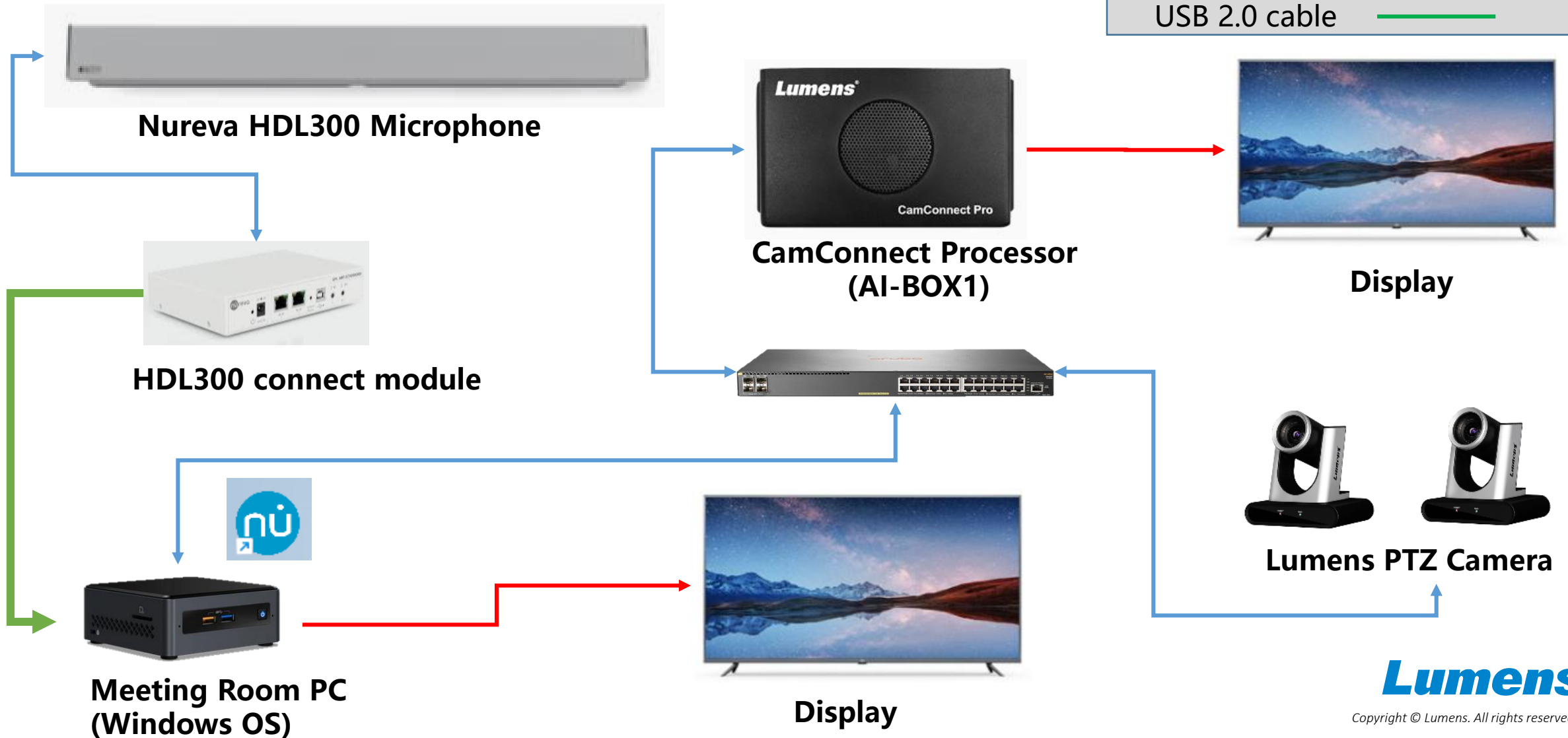
Nureva HDL300
Settings Guide

Nureva HDL300

1. Hardware Connections

1.1 Hardware Connections

Cable define	
Cat5e	
HDMI cable	
USB 2.0 cable	



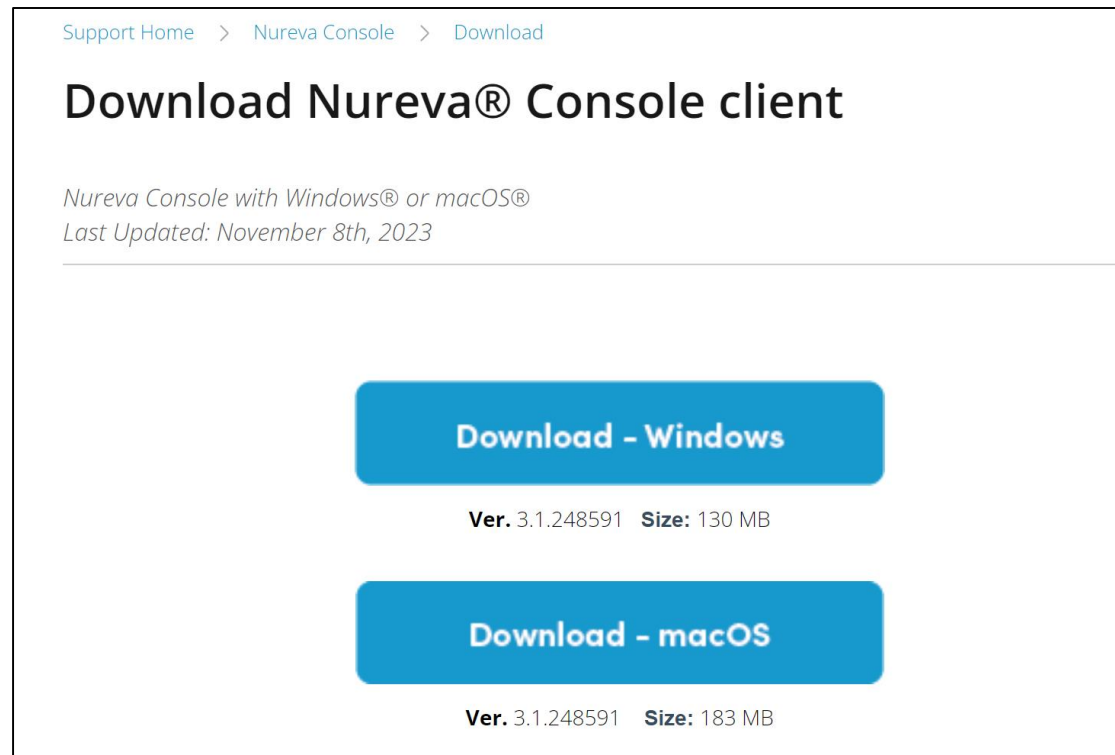
Nureva HDL300

2. Install Nureva Console client

2.1 Install Nureva Console client

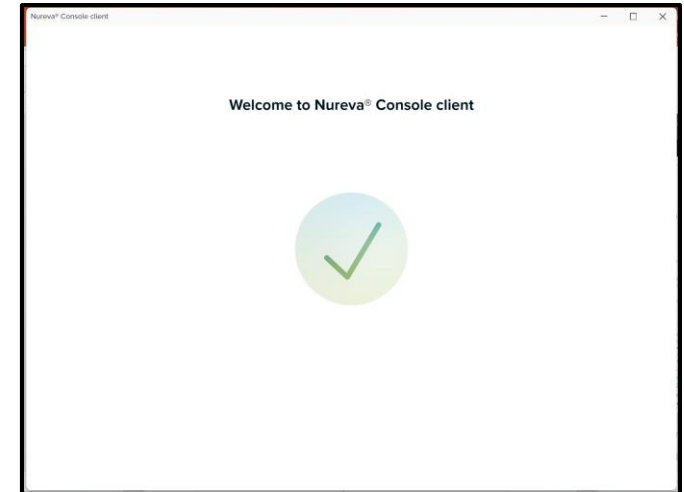
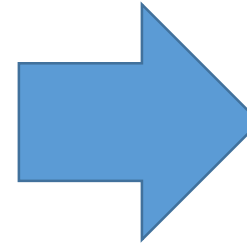
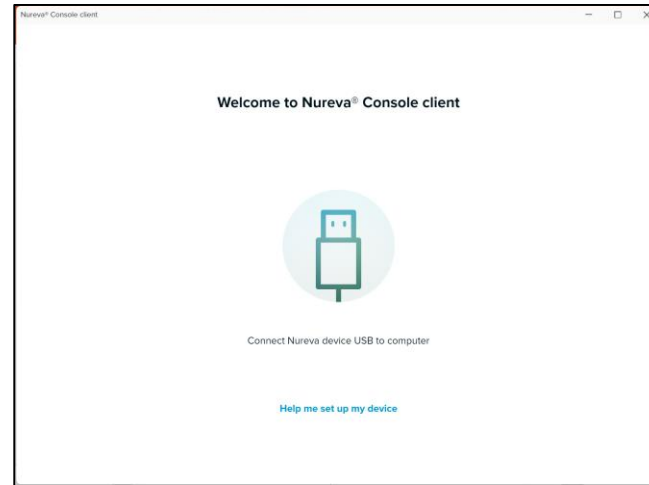
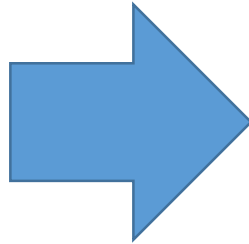
■ Download [Console Client]

<https://support.nureva.com/97341-download/win-mac-download-nureva-console-client>



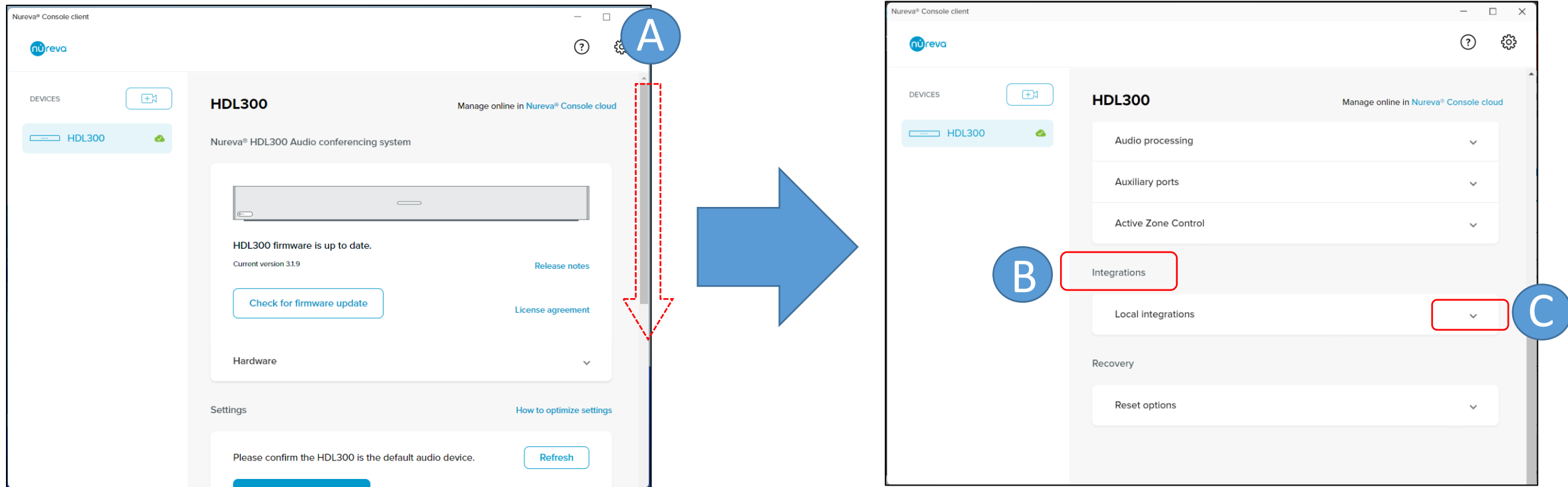
The screenshot shows a support page with a breadcrumb trail: Support Home > Nureva Console > Download. The main heading is "Download Nureva® Console client". Below it, the text reads "Nureva Console with Windows® or macOS®" and "Last Updated: November 8th, 2023". There are two blue buttons: "Download - Windows" and "Download - macOS". Below the Windows button, it says "Ver. 3.1.248591 Size: 130 MB". Below the macOS button, it says "Ver. 3.1.248591 Size: 183 MB".

2.2 Set up Nureva Console client



Install Nureva Console client then launch the Console client app. Connect the Nureva connect module to the PC with a USB cable.

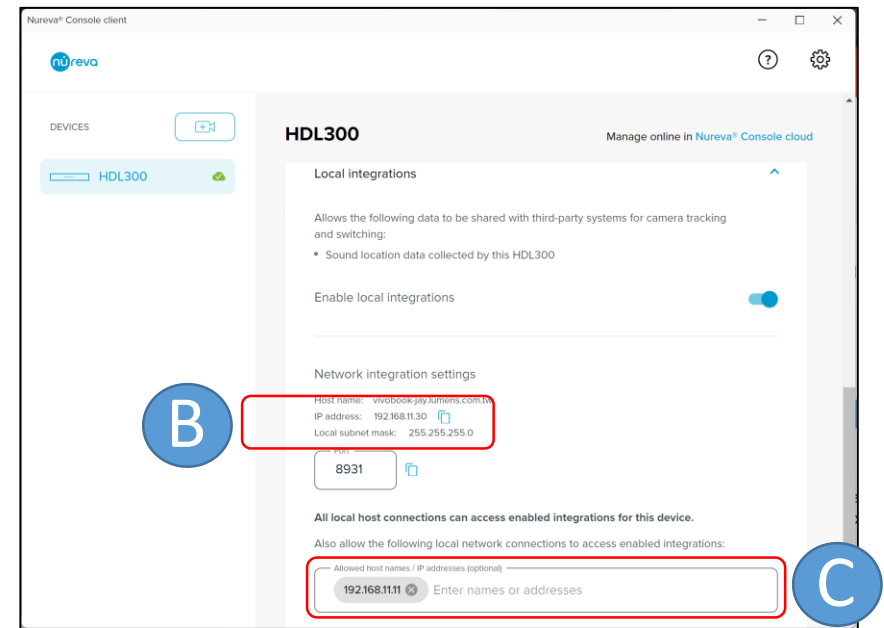
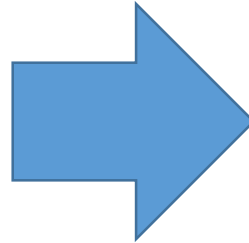
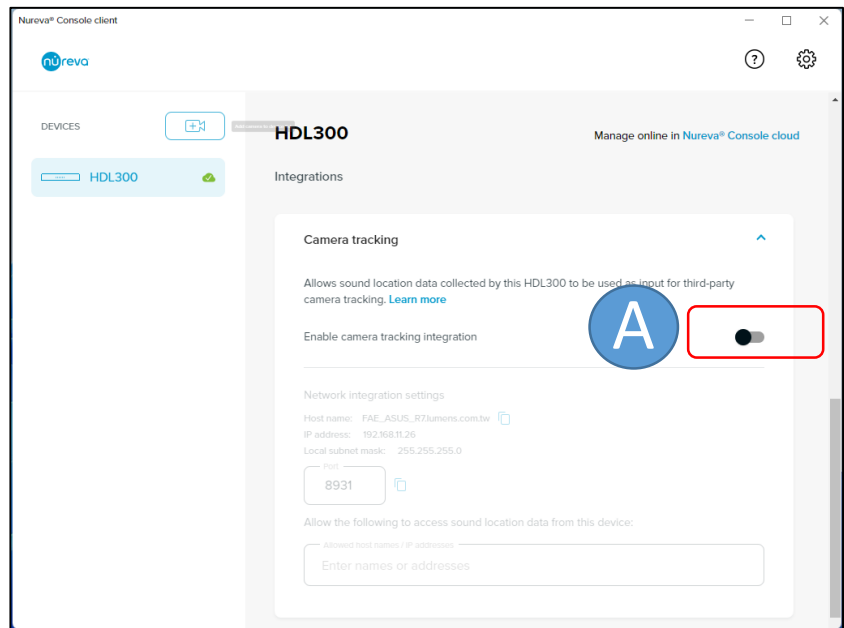
2.3 Set up Nureva HDL300 integration



A: Pull the vertical scroll bar of the Console client down

B: Go to the 'Integrations' option and expand [Local integrations]

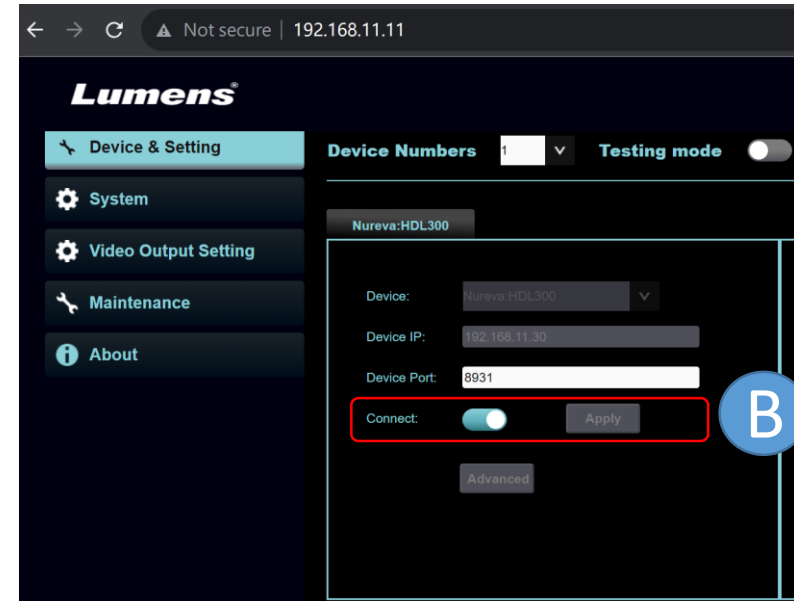
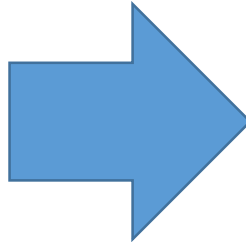
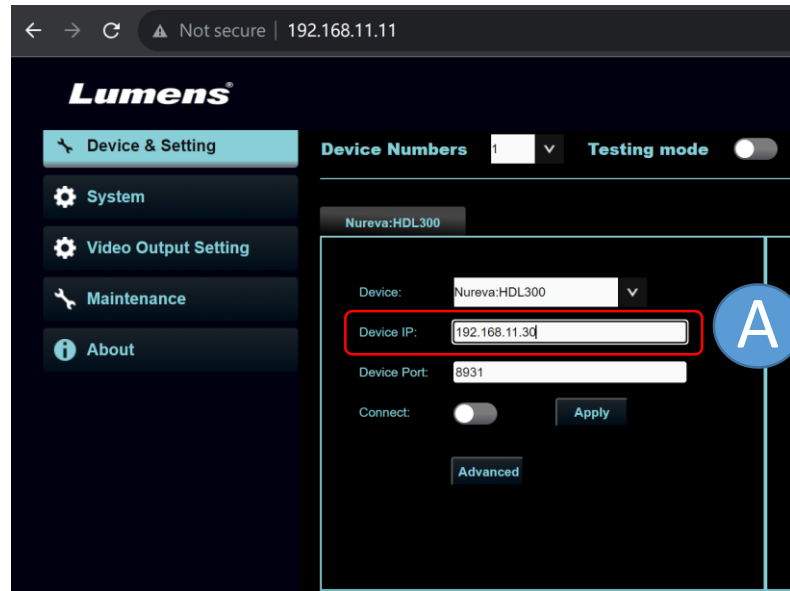
2.4 Setup camera tracking integration



A: Enable [Network integration settings]

B: Copy the IP address (C)

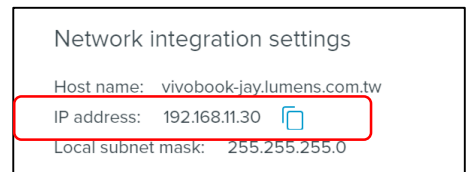
2.5 Setup camera tracking integration



A: Enter the Nureva device's IP

B: Press [Apply] and the toggle [connect] bar to enable

⊗ Nureva's default port is 8931. Please confirm the port is permitted to connect with your PC.



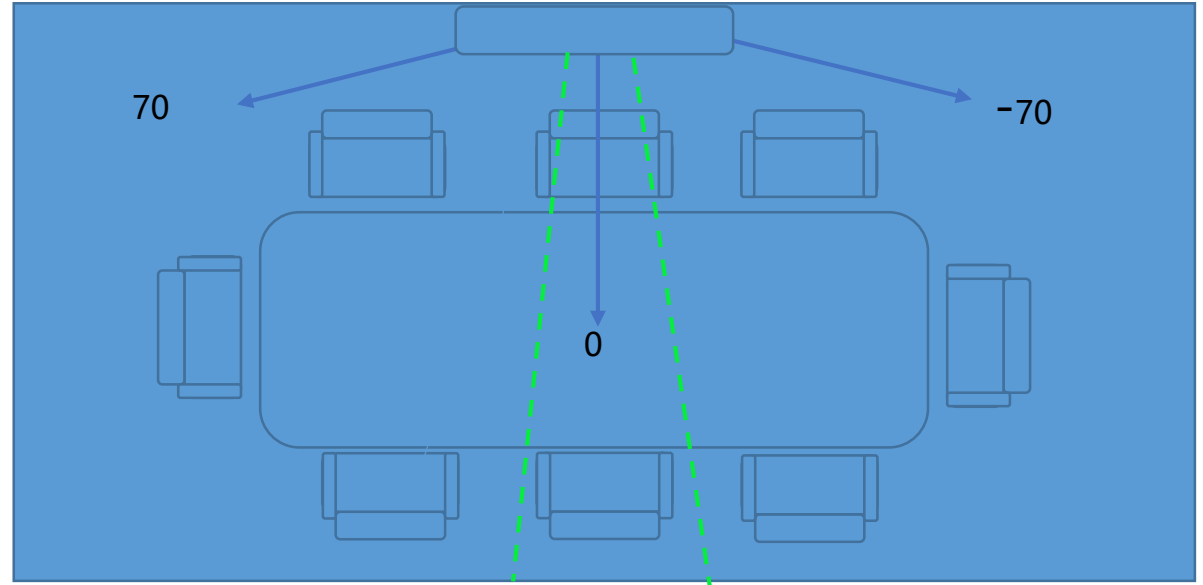
3. Set angle positions

3.1 Set angle positions

Azimuth Angle			Camera	Preset No.		
<input type="radio"/>	-70	~ -53	Off	▼	1	▼
<input type="radio"/>	-53	~ -35	Off	▼	2	▼
<input type="radio"/>	-35	~ -18	Off	▼	3	▼
<input type="radio"/>	-18	~ 0	Off	▼	4	▼
<input checked="" type="radio"/>	0	~ 17	Off	▼	5	▼
<input type="radio"/>	17	~ 35	Off	▼	6	▼
<input type="radio"/>	35	~ 52	Off	▼	7	▼
<input type="radio"/>	52	~ 70	Off	▼	8	▼

Apply

Mic. Azimuth Angle: 0



Note: The maximum “Azimuth Angle” range is -70 to +70 degrees. 0-degrees is the center point. The diagram above shows a sound source detected in the 0-degree region.